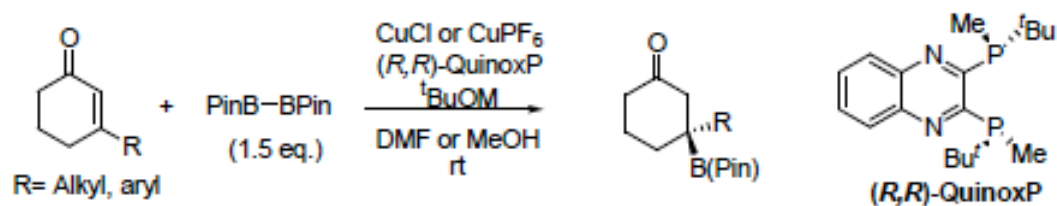
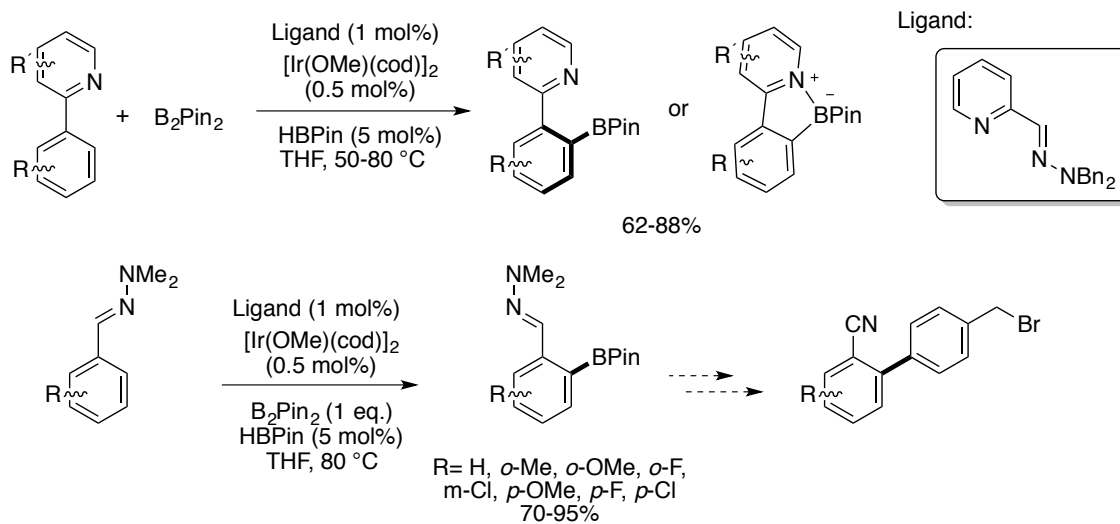
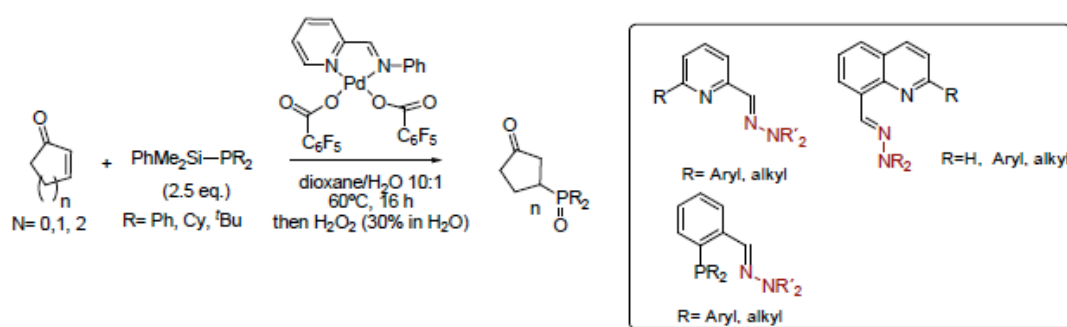


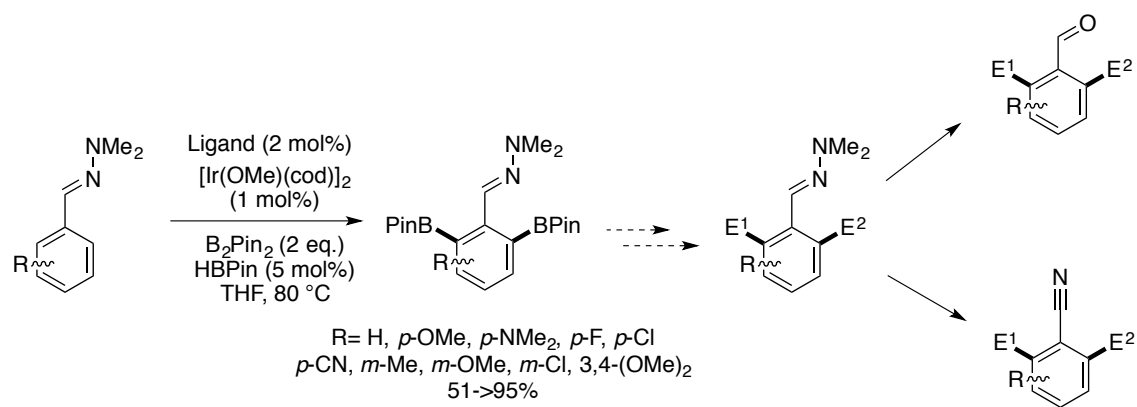
Cu(I) conjugate boration of β -substituted cyclic enones¹



Palladium(II)-catalyzed conjugate phosphination of Michael acceptors²



Scheme 1.



Scheme 2.

¹ Chen, I-H.; Yin, L.; Itano, W.; Kanai, M.; Shibasaki, M. *J. Am. Chem. Soc.* **2009**, *131*, 11664.

² Trepohl, V. T.; Mori, S.; Itami, K.; Oestreich, M. *Org. Lett.* **2009**, *11*, 1091.